

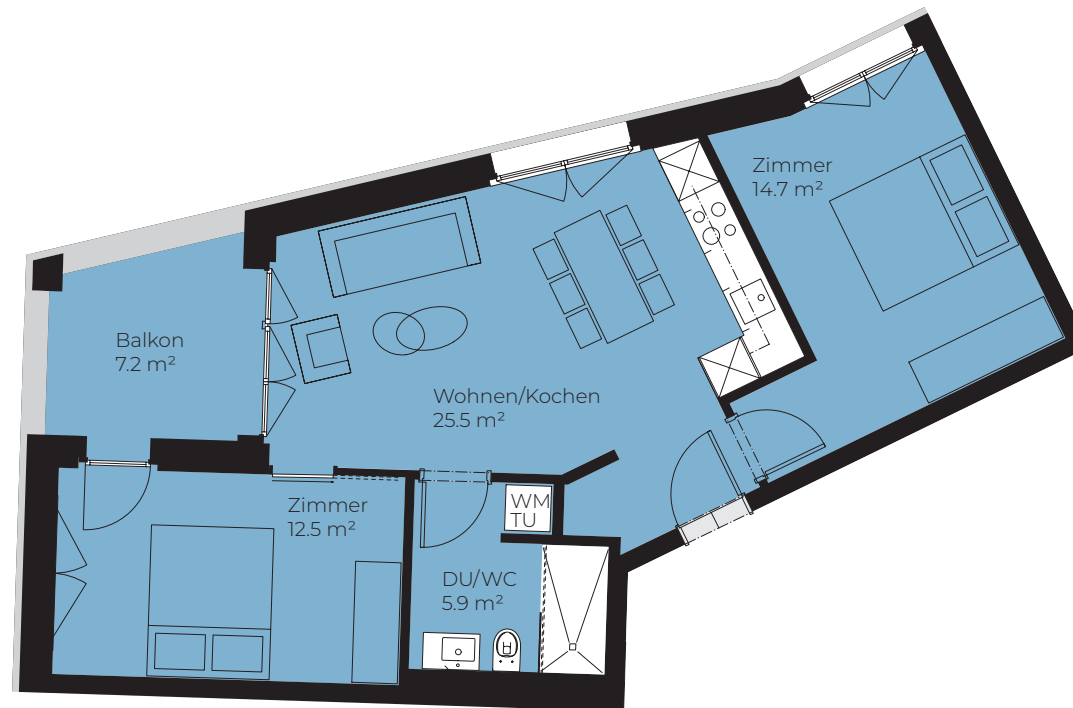
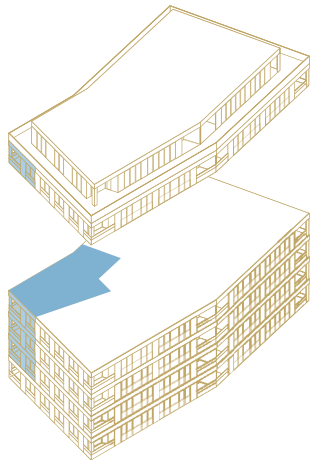
Wohnung E.1, 1.1, 2.1, 3.1

Erdgeschoss–3. Obergeschoss

3½-Zimmer

Nettowohnfläche: 58.6 m²

Balkon: Erdgeschoss 7.2 m², 1.–3. Obergeschoss 7.4 m²



1 m 2 m 3 m 4 m 5 m

Masstab 1:100